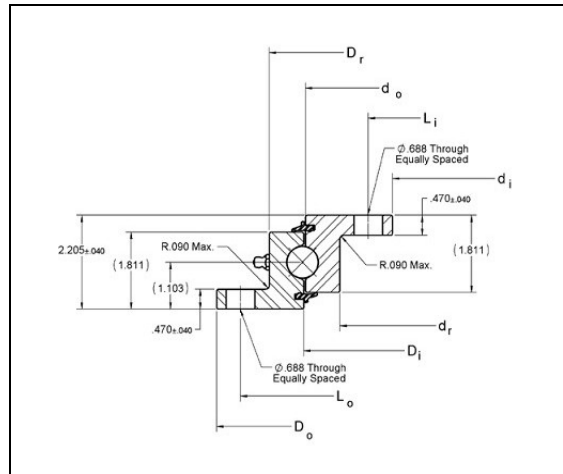


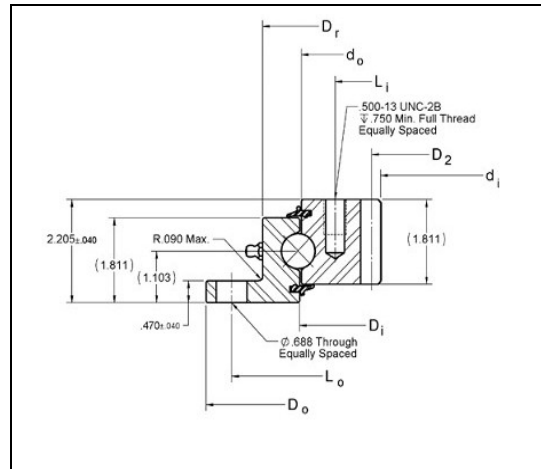
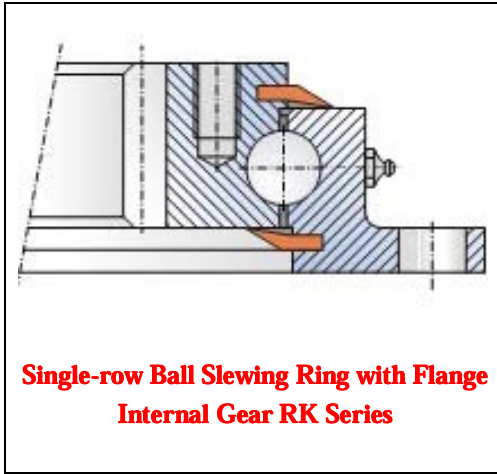


SLEWING RING CATALOGUE-2011 VERSION



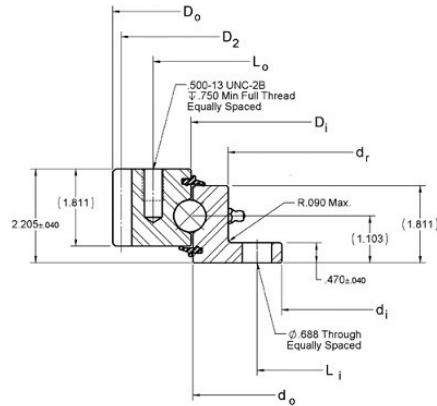
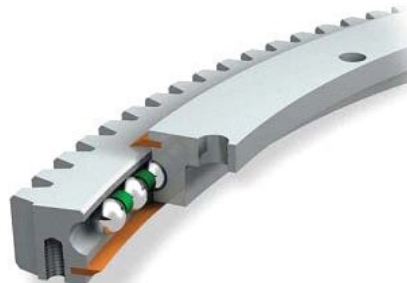
SOCARE® No.	KAYDON No.	Outline Dimensions (in.) and Weight (lbs)						
		D _o	d _i	D _r	D _i	d _o	d _r	G (lbs)
SCB-RK-518	RK6-16P1Z	20.390	11.970	17.870	16.220	16.140	14.490	58
SCB-RK-648	RK6-22P1Z	25.510	17.090	22.990	21.340	21.260	19.610	76
SCB-RK-748	RK6-25P1Z	29.450	21.030	26.930	25.280	25.200	23.550	89
SCB-RK-848	RK6-29P1Z	33.390	24.970	30.870	29.220	29.140	27.490	104
SCB-RK-948	RK6-33P1Z	37.320	28.900	34.800	33.150	33.070	31.420	118
SCB-RK-1048	RK6-37P1Z	41.260	32.840	38.740	37.090	37.010	35.360	132
SCB-RK-1198	RK6-43P1Z	47.170	38.750	44.650	43.000	42.920	41.270	153
Tolerance		± 0.040	± 0.040	+0.000 -0.080	Ref	Ref	+0.080 -0.000	

SOCARE® No.	KAYDON No.	Mounting Holes (in.)				Gear Data α=20°				Moment Rating C _{rm} (ft-lbs)
		Outer Ring		Inner Ring		D ₂	P _d	Z ₂	F _z	
		L _o	n _o	L _i	n _i					
SCB-RK-518	RK6-16P1Z	19.250	8	13.130	12				22,700	
SCB-RK-648	RK6-22P1Z	24.380	12	18.130	15				37,700	
SCB-RK-748	RK6-25P1Z	28.380	12	22.130	18				49,800	
SCB-RK-848	RK6-29P1Z	32.250	15	26.130	18				54,200	
SCB-RK-948	RK6-33P1Z	36.250	18	30.000	18				56,500	
SCB-RK-1048	RK6-37P1Z	40.130	18	34.000	20				65,200	
SCB-RK-1198	RK6-43P1Z	46.000	18	39.880	24				75,500	



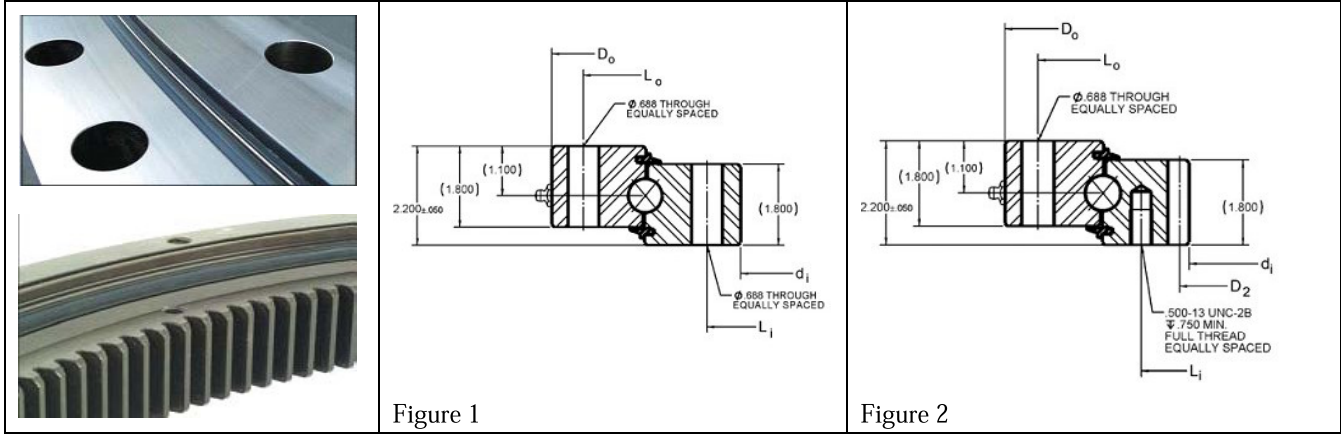
SOCARE® No.	KAYDON No.	Outline Dimensions (in.) and Weight (lbs)						
		D _o	d _i	D _r	D _i	d _o	d _r	G (lbs)
SCB-RK-N-518	RK6-16N1Z	20.390	12.850	17.870	16.220	16.140	--	65
SCB-RK-N-648	RK6-22N1Z	25.510	17.600	22.990	21.340	21.260	--	90
SCB-RK-N-748	RK6-25N1Z	29.450	21.600	26.930	25.280	25.200	--	106
SCB-RK-N-848	RK6-29N1Z	33.390	25.600	30.870	29.220	29.140	--	121
SCB-RK-N-948	RK6-33N1Z	37.320	29.133	34.800	33.150	33.070	--	148
SCB-RK-N-1048	RK6-37N1Z	41.260	33.133	38.740	37.090	37.010	--	165
SCB-RK-N-1198	RK6-43N1Z	47.170	39.133	44.650	43.000	42.920	--	188
Tolerance		± 0.040	+0.030 -0.000	+0.000 -0.080	Ref	Ref	Ref	

SOCARE® No.	KAYDON No.	Mounting Holes (in.)				Gear Data α=20°				Moment Rating C _{rm} (ft-lbs)
		Outer Ring		Inner Ring		D ₂	P _d	Z ₂	F _z lbs	
		L _o	n _o	L _i	n _i					
SCB-RK-N-518	RK6-16N1Z	19.250	8	14.880	12	13.250	4	53	6800	22,700
SCB-RK-N-648	RK6-22N1Z	24.380	10	19.630	15	18.000	4	72	6530	37,700
SCB-RK-N-748	RK6-25N1Z	28.380	12	23.630	18	22.000	4	88	6400	49,800
SCB-RK-N-848	RK6-29N1Z	32.250	15	27.630	18	26.000	4	104	6300	54,200
SCB-RK-N-948	RK6-33N1Z	36.250	18	31.500	18	29.667	3	89	8520	56,500
SCB-RK-N-1048	RK6-37N1Z	40.130	18	35.500	20	33.667	3	101	8420	65,200
SCB-RK-N-1198	RK6-43N1Z	46.000	18	41.500	24	39.667	3	119	8340	75,500



Single-row Ball Slewing Ring with Flange External Gear RK Series

SOCARE® No.	KAYDON No.	Outline Dimensions (in.) and Weight (lbs)								
		D _o	d _i	D _r	D _i	d _o	d _r	G (lbs)		
SCB-RK-E-505	RK6-16E1Z	19.900	11.970	--	16.220	16.140	14.490	72		
SCB-RK-E-638	RK6-22E1Z	25.150	17.090	--	21.340	21.260	19.610	96		
SCB-RK-E-740	RK6-25E1Z	29.150	21.030	--	25.280	25.200	23.550	115		
SCB-RK-E-835	RK6-29E1Z	32.900	24.970	--	29.220	29.140	27.490	128		
SCB-RK-E-945	RK6-33E1Z	37.200	28.900	--	33.150	33.070	31.420	152		
SCB-RK-E-1046	RK6-37E1Z	41.200	32.840	--	37.090	37.010	35.360	172		
SCB-RK-E-1190	RK6-43E1Z	46.867	38.750	--	43.000	42.920	41.270	189		
Tolerance		+0.000 -0.030	± 0.040	Ref	Ref	Ref	Ref			
SOCARE® No.	KAYDON No.	Mounting Holes (in.)				Gear Data α=20°				Moment Rating C _{rm} (ft-lbs)
		Outer Ring		Inner Ring		D ₂	P _d	Z ₂	F _z lbs	
		L _o	n _o	L _i	n _i					
SCB-RK-E-505	RK6-16E1Z	18.000	8	13.130	12	19.500	4	78	5560	22,700
SCB-RK-E-638	RK6-22E1Z	23.250	12	18.130	15	24.750	4	99	5650	37,700
SCB-RK-E-740	RK6-25E1Z	27.250	15	22.130	18	28.750	4	115	5700	49,800
SCB-RK-E-835	RK6-29E1Z	31.000	18	26.130	18	32.500	4	130	5740	54,200
SCB-RK-E-945	RK6-33E1Z	35.000	18	30.000	18	36.667	3	110	7580	56,500
SCB-RK-E-1046	RK6-37E1Z	38.880	18	34.000	20	40.667	3	122	7620	65,200
SCB-RK-E-1190	RK6-43E1Z	44.630	20	39.880	24	46.333	3	139	7680	75,500



No Gear series, please contrast-Figure 1

SOCARE® No.	KAYDON No.	Outline Dimensions (in.)			Mounting Holes (in.)				Gear Data $\alpha=20^\circ$				MOMENT RATIN C _{rm}
		Weight "G"(lbs)			Outer Ring		Inner Ring		D ₂	P _d	Z ₂	F _z lbs	
		D _o	d _i	G	L _o	n _o	L _i	n _i					
SCB-HS-518	HS6-16P1Z	20.400	12.000	103	19.000	8	13.500	12	--	--	--	--	50,500
SCB-HS-648	HS6-21P1Z	25.500	17.000	137	24.000	12	18.500	15	--	--	--	--	72,700
SCB-HS-749	HS6-25P1Z	29.500	21.000	162	28.000	15	22.500	18	--	--	--	--	91,800
SCB-HS-848	HS6-29P1Z	33.400	25.000	186	32.000	15	26.500	18	--	--	--	--	111,900
SCB-HS-950	HS6-33P1Z	37.400	28.830	216	35.750	18	30.500	20	--	--	--	--	128,000
SCB-HS-1048	HS6-37P1Z	41.250	32.830	233	39.750	18	34.380	20	--	--	--	--	130,900
SCB-HS-1198	HS6-43P1Z	47.180	38.750	269	45.620	20	40.250	24	--	--	--	--	139,900

Internal Gear series, please contrast-Figure 2

SOCARE® No.	KAYDON No.	Outline Dimensions (in.)			Mounting Holes (in.)				Gear Data $\alpha=20^\circ$				MOMENT RATIN C _{rm}
		Weight "G"(lbs)			Outer Ring		Inner Ring		D ₂ (in.)	P _d	Z ₂	F _z lbs	
		D _o	d _i	G	L _o	n _o	L _i	n _i					
SCB-HS-N-518	HS6-16N1Z	20.400	12.850	92	19.000	8	14.880	16	13.250	4	53	6084	50,500
SCB-HS-N-648	HS6-21N1Z	25.500	17.600	117	24.000	12	19.630	20	18.000	4	72	5842	72,700
SCB-HS-N-749	HS6-25N1Z	29.500	21.600	148	28.000	15	23.630	24	22.000	4	88	5719	91,800
SCB-HS-N-848	HS6-29N1Z	33.400	25.600	171	32.000	15	27.630	28	26.000	4	104	5634	111,900
SCB-HS-N-950	HS6-33N1Z	37.400	29.130	205	35.750	18	31.500	30	29.667	3	89	7617	128,000
SCB-HS-N-1048	HS6-37N1Z	41.250	33.133	226	39.750	18	35.500	32	33.667	3	101	7531	130,900
SCB-HS-N-1198	HS6-43N1Z	47.180	39.130	253	45.620	20	41.500	36	39.667	3	119	7434	139,900

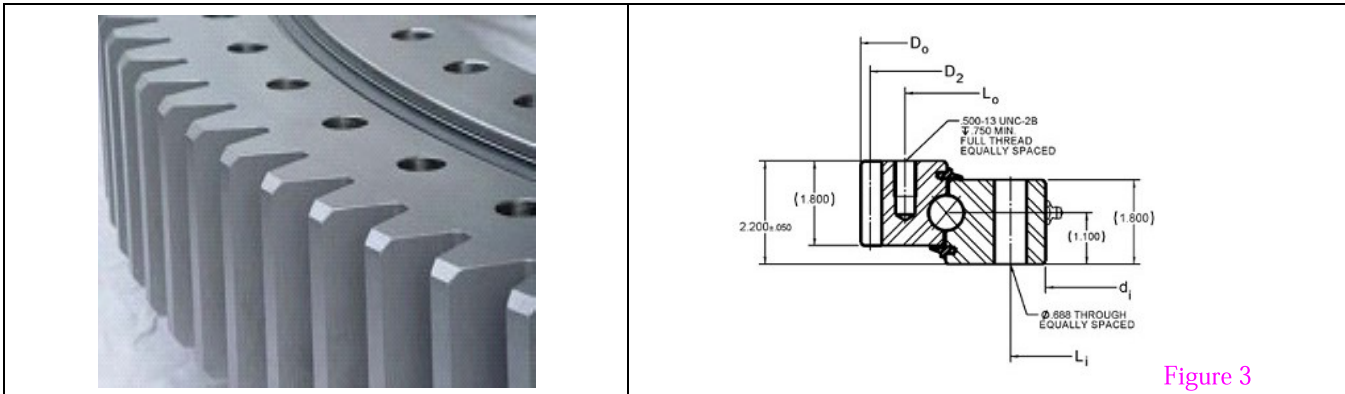
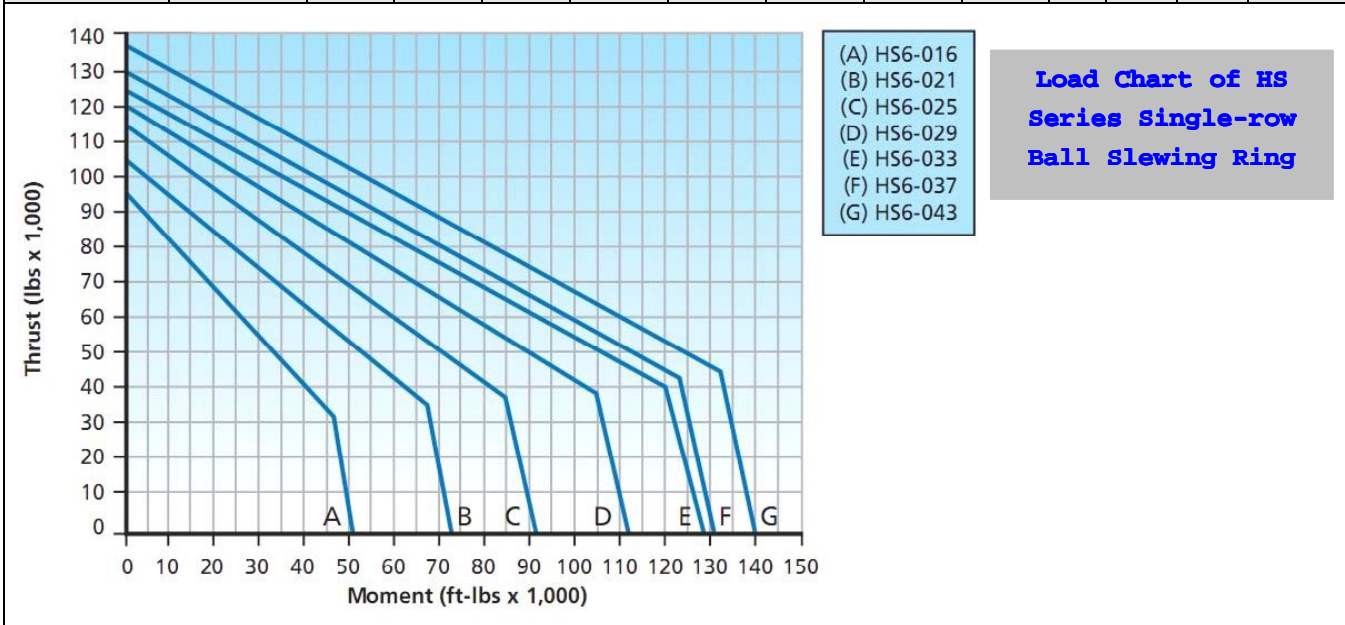


Figure 3

HS Series Single-row Ball Slewing Ring

External Gear series, please contrast-Figure 3

SOCARE® No.	KAYDON No.	Outline Dimensions (in.)			Mounting Holes (in.)				Gear Data $\alpha=20^\circ$				MOMENT RATIN C _{rm}
		Weight "G"(lbs)			Outer Ring		Inner Ring		D ₂	P _d	Z ₂	F _z lbs	
		D _o	d _i	G	L _o	n _o	L _i	n _i					
SCB-HS-E-505	HS6-16E1Z	19.900	12.000	85	18.000	14	13.500	12	19.500	4	78	4981	50,500
SCB-HS-E-638	HS6-21E1Z	25.150	17.000	108	23.250	18	18.500	15	24.750	4	99	5076	72,700
SCB-HS-E-740	HS6-25E1Z	19.150	21.000	137	27.250	20	22.500	18	28.750	4	115	5127	91,800
SCB-HS-E-835	HS6-29E1Z	32.900	25.000	158	31.000	24	26.500	18	32.500	4	130	5164	111,900
SCB-HS-E-945	HS6-33E1Z	37.200	28.830	188	35.000	28	30.500	20	36.667	3	110	6817	128,000
SCB-HS-E-1046	HS6-37E1Z	41.200	32.830	207	38.880	28	34.380	20	40.667	3	122	6860	130,900
SCB-HS-E-1190	HS6-43E1Z	46.870	38.750	237	44.630	32	40.250	24	46.333	3	139	6910	139,900



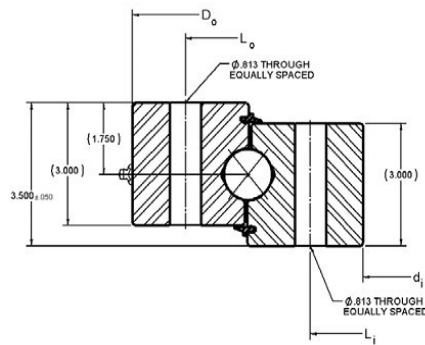


Figure 1

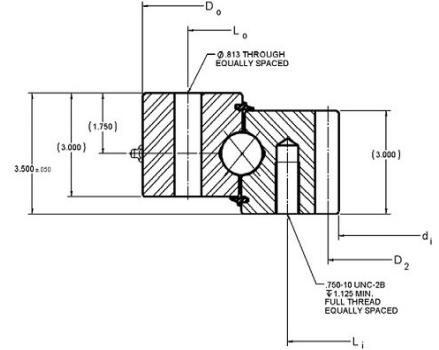


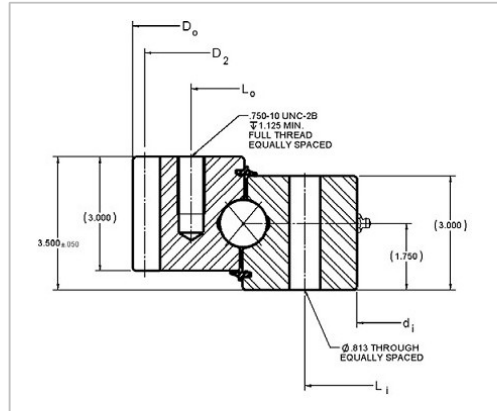
Figure 2

No Gear series, please contrast-Figure 1

SOCARE® No.	KAYDON No.	Outline Dimensions (in.)			Mounting Holes (in.)				Gear Data $\alpha=20^\circ$				MOMENT RATIN C _{rm}
		Weight "G"(lbs)			Outer Ring		Inner Ring		D ₂	P _d	Z ₂	F _z lbs	
		D _o	d _i	G	L _o	n _o	L _i	n _i					
SCB-HT-914	HT10-30PIZ	36.000	24.000	447	33.250	24	26.750	30	--	--	--	--	340,000
SCB-HT-1066	HT10-36PIZ	42.000	30.000	521	39.250	28	32.750	32	--	--	--	--	395,700
SCB-HT-1219	HT10-42PIZ	48.000	36.000	628	45.250	32	38.750	36	--	--	--	--	457,000
SCB-HT-1371	HT10-48PIZ	54.000	42.000	719	51.250	36	44.750	40	--	--	--	--	517,900
SCB-HT-1524	HT10-54PIZ	60.000	48.000	809	57.250	40	50.750	44	--	--	--	--	578,400
SCB-HT-1676	HT10-60PIZ	66.000	54.000	865	63.250	44	56.750	48	--	--	--	--	638,800

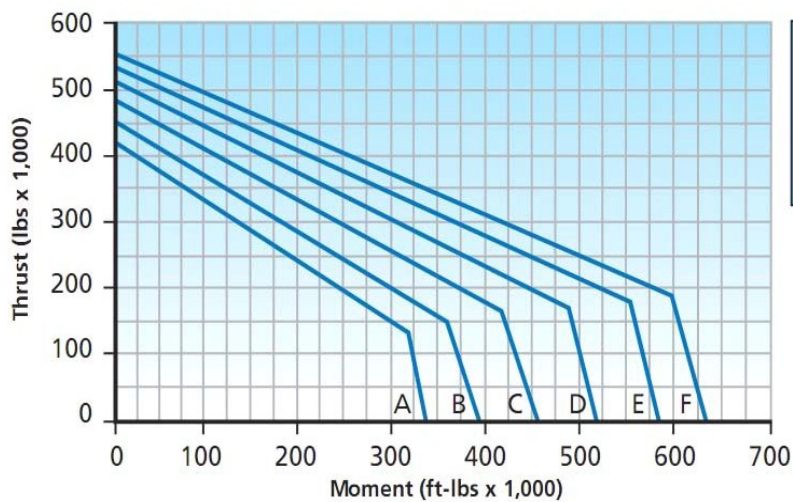
Internal Gear series, please contrast-Figure 2

SOCARE® No.	KAYDON No.	Outline Dimensions (in.)			Mounting Holes (in.)				Gear Data $\alpha=20^\circ$				MOMENT RATIN C _{rm}
		Weight "G"(lbs)			Outer Ring		Inner Ring		D ₂ (in.)	P _d	Z ₂	F _z lbs	
		D _o	d _i	G	L _o	n _o	L _i	n _i					
SCB-HT-N-914	HT10-30N1Z	36.000	24.160	411	33.250	24	27.250	30	24.800	2.5	62	21783	340,000
SCB-HT-N-1066	HT10-36N1Z	42.000	30.160	517	39.250	28	33.250	32	30.800	2.5	77	21195	395,700
SCB-HT-N-1219	HT10-42N1Z	48.000	36.160	580	45.250	32	39.250	36	36.800	2.5	92	20819	457,000
SCB-HT-N-1371	HT10-48N1Z	54.000	42.160	689	51.250	36	45.250	40	42.800	2.5	107	20548	517,900
SCB-HT-N-1524	HT10-54N1Z	60.000	48.160	775	57.250	40	51.250	44	48.800	2.5	122	20344	578,400
SCB-HT-N-1676	HT10-60N1Z	66.000	54.160	842	63.250	44	57.250	48	54.800	2.5	137	20185	638,800

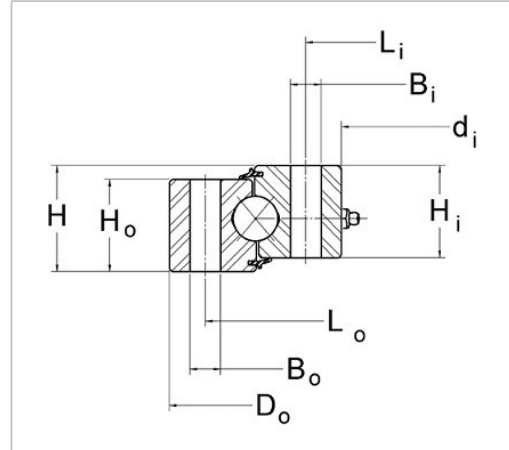


External Gear series, please contrast-Figure 3

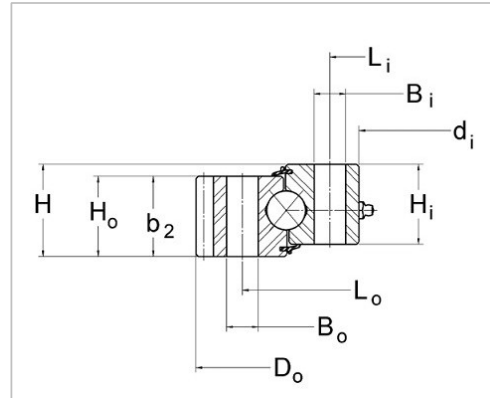
SOCARE® No.	KAYDON No.	Outline Dimensions (in.)			Mounting Holes (in.)				Gear Data $\alpha=20^\circ$				MOMENT RATIN C _{rm}
		Weight "G"(lbs)			Outer Ring		Inner Ring		D ₂	P _d	Z ₂	F _z lbs	
		D _o	d _i	G	L _o	n _o	L _i	n _i					
SCB-HT-E-910	HT10-30E1Z	35.840	24.000	398	32.750	24	26.750	30	35.200	2.5	88	18393	340,000
SCB-HT-E-1062	HT10-36E1Z	41.840	30.000	481	38.750	28	32.750	32	41.200	2.5	103	18608	395,700
SCB-HT-E-1215	HT10-42E1Z	47.840	36.000	562	44.750	32	38.750	36	47.200	2.5	118	18772	457,000
SCB-HT-E-1367	HT10-48E1Z	53.840	42.000	660	50.750	36	44.750	40	53.200	2.5	133	18901	517,900
SCB-HT-E-1519	HT10-54E1Z	59.840	48.000	742	56.750	40	50.750	44	59.200	2.5	148	19005	578,400
SCB-HT-E-1672	HT10-60E1Z	65.840	54.000	800	62.750	44	56.750	48	65.200	2.5	163	19090	638,800







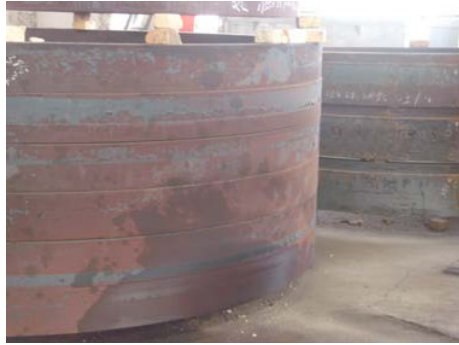
SOCARE® No.	KAYDON No.	Outline Dimensions (in.) and Weight (lbs)					Mounting Holes						MOMENT RATING C _{rm} ft-lbs
							Outer Ring			Inner Ring			
		D _o	d _i	H	H _i /H _o	G (lbs)	L _o	n _o	B _o	L _i	n _i	B _i	
SBC-050T	MTO-050T	4.331	1.968	0.787	0.728	2	3.818	8	M6	2.480	8	M6	830
SBC-065T	MTO-065T	5.315	2.559	0.866	0.787	4	4.724	8	M8	3.149	8	M8	1330
SBC-122	MTO-122	8.898	4.803	1.339	1.142	13	8.189	12	0.354	5.512	12	0.354	5020
SBC-122T	MTO-122T	8.898	4.803	1.339	1.142	13	8.189	12	M8	5.512	12	M8	5020
SBC-143	MTO-143	9.803	5.630	1.339	1.142	15	8.937	12	0.433	6.496	12	0.433	8950
SBC-143T	MTO-143T	9.803	5.630	1.339	1.142	15	8.937	12	M10	6.496	12	M10	8950
SBC-145	MTO-145	11.811	5.709	1.968	1.732	37	10.630	16	0.562	6.890	16	0.562	26000
SBC-145T	MTO-145T	11.811	5.709	1.968	1.732	37	10.630	16	5/8-11	6.890	16	5/8-11	26000
SBC-145X	MTO-145X	12.286	5.709	1.968	1.732	41	10.630	16	0.594	6.890	16	0.594	30600
SBC-170	MTO-170	12.205	6.693	1.811	1.614	33	11.024	12	0.512	7.874	12	0.512	16520
SBC-170T	MTO-170T	12.205	6.693	1.811	1.614	33	11.024	12	M12	7.874	12	M12	16520
SBC-210	MTO-210	14.370	8.268	1.575	1.496	38	13.190	16	0.562	9.449	20	0.562	44500
SBC-210T	MTO-210T	14.370	8.268	1.575	1.496	38	13.190	16	5/8-11	9.449	20	5/8-11	44500
SBC-210X	MTO-210X	14.686	8.268	1.968	1.732	48	13.190	16	0.594	9.449	20	0.594	52100
SBC-265	MTO-265	16.535	10.433	1.968	1.732	54	15.354	18	0.562	11.614	24	0.562	62000
SBC-265T	MTO-265T	16.535	10.433	1.968	1.732	54	15.354	18	5/8-11	11.614	24	5/8-11	62000
SBC-265X	MTO-265X	17.086	10.433	1.968	1.732	61	15.354	18	0.594	11.614	24	0.594	71900
SBC-324T	MTO-324T	20.486	12.750	2.062	2.022	105	18.875	20	5/8-11	14.375	20	5/8-11	102400
SBC-324X	MTO-324X	20.486	12.770	2.375	2.063	105	18.875	20	0.688	14.375	20	0.688	102400

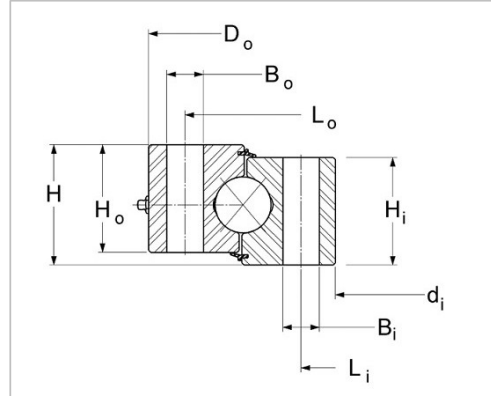


SOCARE® No.	KAYDON No.	Outline Dimensions (in.) and Weight (lbs)					Mounting Holes						MOMENT RATING C _{rm} ft-lbs
							Outer Ring			Inner Ring			
		D _o	d _i	H	H _o /H _i	G (lbs)	L _o	n _o	B _o	L _i	n _i	B _i	
SCB-MTE-145	MTE-145	12.286	5.709	1.968	1.732	38	10.630	16	0.562	6.890	16	0.562	26000
SCB-MTE-145T	MTE-145T	12.286	5.709	1.968	1.732	38	10.630	16	5/8-11	6.890	16	5/8-11	26000
SCB-MTE-145X	MTE-145X	12.286	5.709	1.968	1.732	38	10.630	16	0.594	6.890	16	0.594	30600
SCB-MTE-210	MTE-210	14.686	8.268	1.575	1.496	38	13.190	16	0.562	9.449	20	0.562	44500
SCB-MTE-210T	MTE-210T	14.686	8.268	1.575	1.496	38	13.190	16	5/8-11	9.449	20	5/8-11	44500
SCB-MTE-210X	MTE-210X	14.686	8.268	1.968	1.732	44	13.190	16	0.594	9.449	20	0.594	52100
SCB-MTE-265	MTE-265	17.086	10.433	1.968	1.732	57	15.354	18	0.562	11.614	24	0.562	62000
SCB-MTE-265T	MTE-265T	17.086	10.433	1.968	1.732	57	15.354	18	5/8-11	11.614	24	5/8-11	62000
SCB-MTE-265X	MTE-265X	17.086	10.433	1.968	1.732	57	15.354	18	0.594	11.614	24	0.594	71900
SCB-MTE-324T	MTE-324T	20.486	12.750	2.062	2.022	98	18.875	20	5/8-11	14.375	20	5/8-11	102400
SCB-MTE-324X	MTE-324X	20.486	12.770	2.375	2.063	99	18.875	20	0.688	14.375	20	0.688	102400
SCB-MTE-415	MTE-415	24.650	16.250	2.375	2.063	132	22.250	16	0.813	17.750	20	0.813	159200
SCB-MTE-415T	MTE-415T	24.650	16.250	2.375	2.063	132	22.250	16	3/4-10	17.750	20	3/4-10	159200
SCB-MTE-470	MTE-470	26.900	18.500	2.375	2.063	147	24.500	18	0.813	20.000	24	0.813	191600
SCB-MTE-470T	MTE-470T	26.900	18.500	2.375	2.063	147	24.500	18	3/4-10	20.000	24	3/4-10	191600
SCB-MTE-540	MTE-540	29.650	21.250	2.375	2.063	163	27.250	24	0.813	22.750	28	0.813	232000
SCB-MTE-540T	MTE-540T	29.650	21.250	2.375	2.063	163	27.250	24	3/4-10	22.750	28	3/4-10	232000
SCB-MTE-590	MTE-590	33.535	23.125	2.875	2.563	283	30.625	18	0.938	24.875	24	0.938	338700
SCB-MTE-590T	MTE-590T	33.534	23.125	2.875	2.563	283	30.625	18	7/8-9	24.875	24	7/8-9	338700
SCB-MTE-705	MTE-705	38.201	27.750	2.875	2.563	325	35.250	24	0.938	29.500	28	0.938	443200
SCB-MTE-705T	MTE-705T	38.201	27.750	2.875	2.563	325	35.250	24	7/8-9	29.500	28	7/8-9	443200
SCB-MTE-730	MTE-730	41.850	28.750	3.250	2.880	491	38.000	20	1.063	31.000	24	1.063	588000
SCB-MTE-730T	MTE-730T	41.850	28.750	3.250	2.880	491	38.000	20	1-8	31.000	24	1-8	588000
SCB-MTE-870	MTE-870	47.444	34.250	4.250	3.875	771	43.875	24	1.188	36.250	28	1.188	873800
SCB-MTE-870T	MTE-870T	47.444	34.250	4.250	3.875	771	43.875	24	1 1/8-7	36.250	28	1 1/8-7	873800



SOCARE® No.	KAYDON No.	Gear Data $\alpha=20^\circ$					Fz (lbs) Max Gear Tooth Loas
		D ₂	P _d	Z ₂	b ₂	Tooth Form	
SCB-MTE-145	MTE-145	12.000	5/7	60	1.732	FS	7,140
SCB-MTE-145T	MTE-145T	12.000	5/7	60	1.732	FS	7,140
SCB-MTE-145X	MTE-145X	12.000	5/7	60	1.732	FS	7,140
SCB-MTE-210	MTE-210	14.400	5/7	72	1.496	FS	5,810
SCB-MTE-210T	MTE-210T	14.400	5/7	72	1.496	FS	5,810
SCB-MTE-210X	MTE-210X	14.400	5/7	72	1.732	FS	7,290
SCB-MTE-265	MTE-265	16.800	5/7	84	1.732	FS	7,330
SCB-MTE-265T	MTE-265T	16.800	5/7	84	1.732	FS	7,330
SCB-MTE-265X	MTE-265X	16.800	5/7	84	1.732	FS	7,330
SCB-MTE-324T	MTE-324T	20.200	5/7	101	2.022	FS	8,700
SCB-MTE-324X	MTE-324X	20.200	5/7	101	2.063	FS	8,863
SCB-MTE-415	MTE-415	24.250	4	97	2.063	SD	10,420
SCB-MTE-415T	MTE-415T	24.250	4	97	2.063	SD	10,420
SCB-MTE-470	MTE-470	26.500	4	106	2.063	SD	10,460
SCB-MTE-470T	MTE-470T	26.500	4	106	2.063	SD	10,460
SCB-MTE-540	MTE-540	29.250	4	117	2.063	SD	10,520
SCB-MTE-540T	MTE-540T	29.250	4	117	2.063	SD	10,520
SCB-MTE-590	MTE-590	33.000	3	99	2.563	SD	17,290
SCB-MTE-590T	MTE-590T	33.000	3	99	2.563	SD	17,290
SCB-MTE-705	MTE-705	37.667	3	113	2.563	SD	17,390
SCB-MTE-705T	MTE-705T	37.667	3	113	2.563	SD	17,390
SCB-MTE-730	MTE-730	41.200	2.5	103	2.630	SD	21,290
SCB-MTE-730T	MTE-730T	41.200	2.5	103	2.630	SD	21,290
SCB-MTE-870	MTE-870	46.800	2.5	117	3.875	SD	31,620
SCB-MTE-870T	MTE-870T	46.800	2.5	117	3.875	SD	31,620



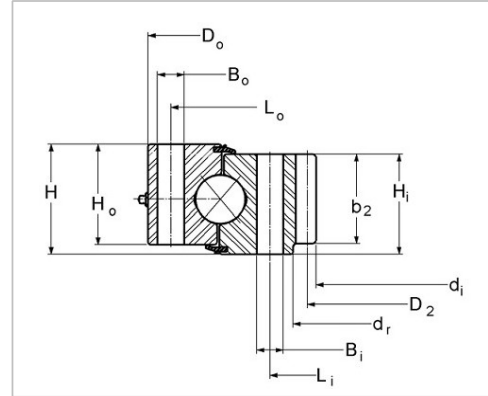


SOCARE® No.	KAYDO N No.	Outline Dimensions (in.) and Weight (lbs)						Hold Data						Moment C _{rm} ft-lbs
								Outer Ring			Inner Ring			
		D _o	d _i	H	H _o	H _i	G (lbs)	L _o	n _o	B _o	L _i	n _i	B _i	
SCB-XT-626	12740001	24.650	16.250	2.375	2.063	2.063	145	22.250	16	0.813	17.750	20	0.813	159000
SCB-XT-683	12750001	26.900	18.500	2.375	2.063	2.063	155	24.500	18	0.813	20.000	24	0.813	188000
SCB-XT-753	12770001	29.650	21.250	2.375	2.063	2.063	180	27.250	24	0.813	22.750	28	0.813	232000
SCB-XT-852	12775001	33.534	23.125	2.875	2.563	2.563	305	30.625	18	0.938	24.875	24	0.938	338000
SCB-XT-970	12780001	38.201	27.750	2.875	2.563	2.563	350	35.250	24	0.938	29.500	28	0.938	443000
SCB-XT-1063	12785001	41.850	28.750	3.250	2.880	2.880	530	38.000	20	1.063	31.000	24	1.063	587000
SCB-XT-1205	12790001	47.444	34.250	4.250	3.875	3.875	835	43.875	24	1.188	36.250	28	1.188	873000
SCB-XT-1556	16289001	61.250	52.325	3.540	2.800	2.800	585	59.625	30	0.844	54.000	30	0.844	348000
SCB-XT-2235	16389001	87.992	69.094	6.024	5.512	5.512	3,330	83.543	52	1.535	73.543	52	1.535	3675000
SCB-XT-3276	16290001	129.000	113.000	5.500	5.000	5.000	3,950	125.500	72	1.063	116.500	72	1.063	1337000
SCB-XT-4521	16291001	178.000	162.000	5.500	5.000	5.000	5,350	174.500	96	1.063	165.500	96	1.063	2258000

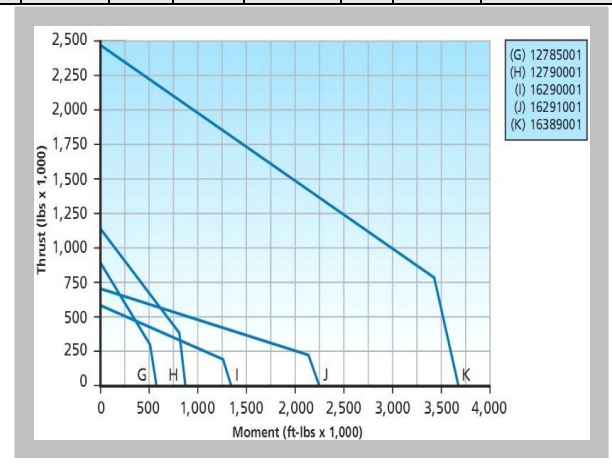
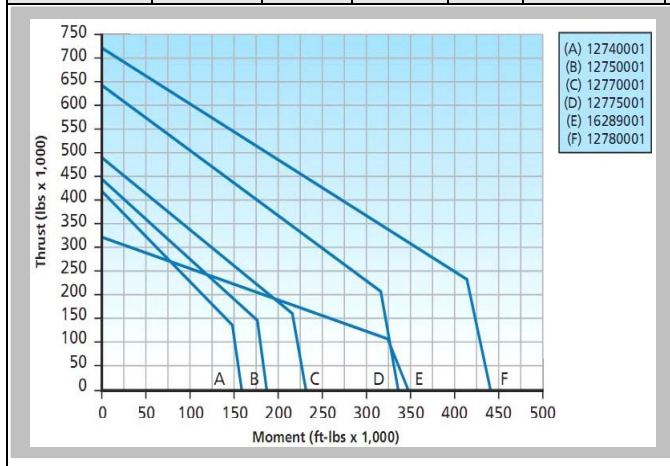




**Single-row Four Contact Ball Slewing Ring
Internal Gear XT Series**

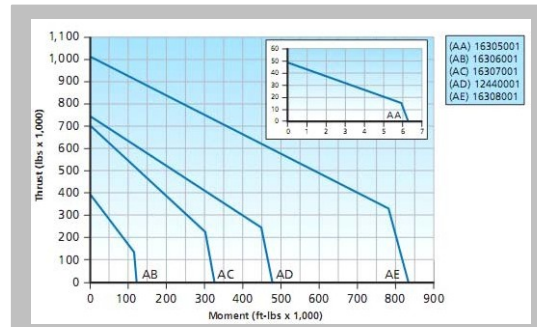
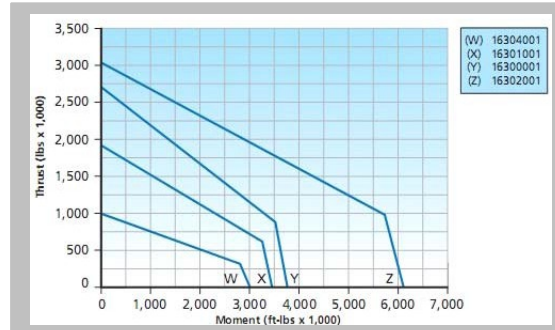
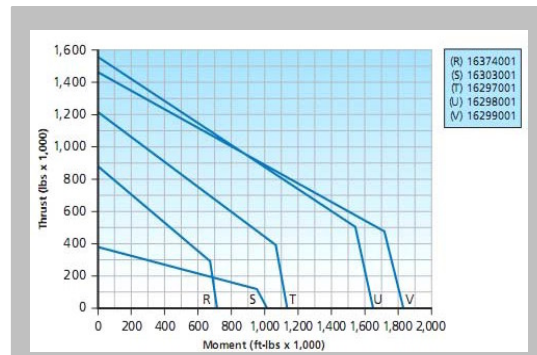
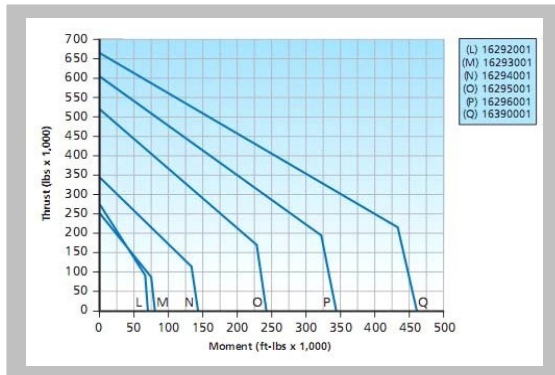


SOCARE® No.	KAYDON No.	Outline Dimensions (in.) and Weight (lbs)					Hole Data						MOMENT RATING C _{rm} ft-lbs
							Outer Ring			Inner Ring			
		D _o	d _i	H	H _o = H _i	G (lbs)	L _o	n _o	B _o	L _i	n _i	B _i	
SCB-XTN-422	16292001	16.625	9.714	1.968	1.732	65	15.354	18	0.594	11.614	24	0.594	71,800
SCB-XTN-520	16293001	20.486	12.750	2.060	2.000	105	18.875	20	0.594	14.375	20	0.594	81,300
SCB-XTN-654	16294001	25.750	16.850	2.750	2.375	180	24.500	18	0.688	19.500	24	0.688	143,000
SCB-XTN-735	16295001	28.937	19.600	2.834	2.480	225	27.165	24	0.813	22.126	30	0.813	244,000
SCB-XTN-870	16296001	34.252	24.921	2.834	2.480	270	32.480	30	0.813	27.441	36	0.813	343,000
SCB-XTN-1038	16390001	40.880	30.560	3.380	2.560 3.000	375	39.250	40	0.813	33.750	40	0.813	461,000
SCB-XTN-1225	16374001	48.250	36.400	4.000	3.500	660	46.125	30	0.938	39.875	36	0.938	720,000
SCB-XTN-1381	16297001	54.375	41.280	5.000	3.875 4.625	1,090	25.500	48	0.938	45.250	48	0.938	1,131,000
SCB-XTN-1581	16298001	62.250	47.760	4.875	4.375	1,370	59.750	48	1.063	51.750	48	1.063	1,650,000
SCB-XTN-1842	16299001	72.500	57.000	6.000	5.000	1,900	69.750	48	1.063	61.500	48	1.063	1,831,000
SCB-XTN-2076	16300001	81.750	62.267	6.500	5.625 6.125	3,080	78.750	52	1.312	67.625	52	1.312	3,764,000
SCB-XTN-2603	16301001	102.500	85.360	7.440	6.780 5.660	3,750	99.803	60	1.312	91.142	60	1.312	3,457,000
SCB-XTN-2972	16302001	117.000	93.600	7.125	6.500	6,200	113.000	52	1.562	100.000	52	1.562	6,125,000
SCB-XTN-3770	16303001	148.425	135.039	4.724	4.134	3,000	146.457	72	0.866	138.583	72	0.866	1,103,000
SCB-XTN-4267	16304001	168.000	151.700	6.000	5.500	5,500	165.120	90	1.313	156.000	90	1.313	3,003,000



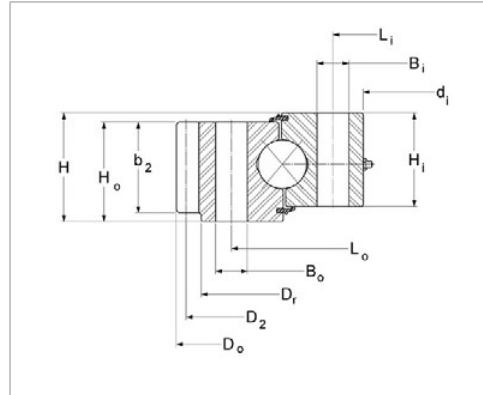


SOCARE® No.	KAYDON No.	Gear Data $\alpha=20^\circ$						Fz (lbs) GearTooth Loas
		D ₂	P _d =M	Z ₂	b ₂	x ₂	Tooth Form	
SCB-XTN-422	16292001	10.000	5/7	50	1.732	0	FS	7,800
SCB-XTN-520	16293001	13.000	5/7	65	2.000	0	FS	8,800
SCB-XTN-654	16294001	17.250	4	69	2.375	0	SD	12,750
SCB-XTN-735	16295001	20.000	4	80	2.480	0	SD	13,250
SCB-XTN-870	16296001	25.250	4	101	2.480	-0.15	SD	12,900
SCB-XTN-1038	16390001	31.200	2.5	78	2.750	0	SD	20,230
SCB-XTN-1225	16374001	37.200	2.5	93	3.250	0	FD	21,290
SCB-XTN-1381	16297001	41.600	2.5	104	3.000	-0.40	SD	24,900
SCB-XTN-1581	16298001	48.400	2.5	121	4.312	0	SD	38,500
SCB-XTN-1842	16299001	58.000	2	116	4.500	0	FD	46,600
SCB-XTN-2076	16300001	63.333	1.5	95	5.000	0	SD	75,450
SCB-XTN-2603	16301001	86.667	1.5	130	5.500	0	FD	81,500
SCB-XTN-2972	16302001	94.667	1.5	142	4.750	0	SD	69,900
SCB-XTN-3770	16303001	135.827	(10)	345	3.543	0	FD	25,300
SCB-XTN-4267	16304001	152.500	2	305	5.000	0	SD	45,400

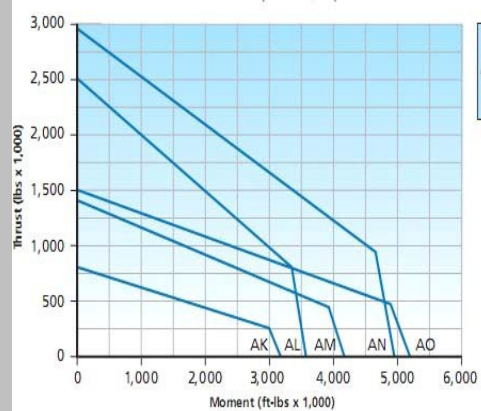
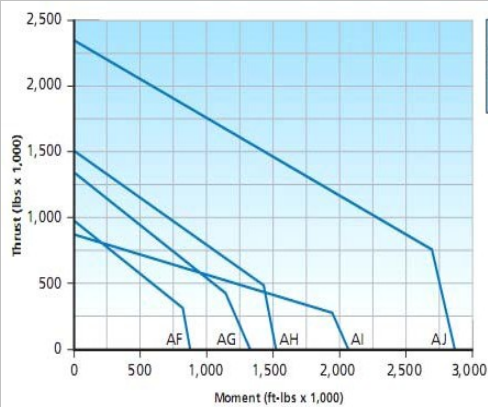




Single-row Four Contact Ball Slewing Ring
External Gear XT Series

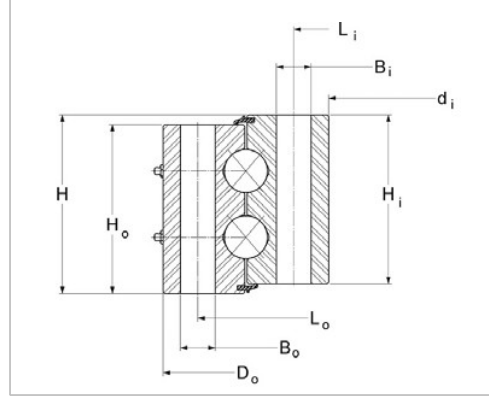


SOCARE® No.	KAYDON No.	Outline Dimensions (in.) and Weight (lbs)						MOMENT RATING C _{rm} ft-lbs
		D _o	d _i	H	H _o - H _i	D _r	G (lbs)	
SCB-XTE-241	16305001	9.500	4.813	1.344	1.414	--	15	6,200
SCB-XTE-540	16306001	21.286	12.438	2.812	2.656	--	140	122,500
SCB-XTE-773	16307001	30.475	19.000	3.625	3.250	--	330	322,000
SCB-XTE-1000	12240001	39.400	29.500	3.875	3.031	38.375	390	477,000
SCB-XTE-1286	16308001	50.640	37.750	4.000	3.620	--	770	832,000
SCB-XTE-1379	1228801	54.300	42.000	4.625	3.625	52.250	770	875,000
SCB-XTE-1428	16309001	56.240	41.370	4.750	3.850 4.400	--	1,133	1,220,000
SCB-XTE-1557	16310001	61.300	47.125	5.875	4.688	59.375	1,420	1,522,000
SCB-XTE-1905	16311001	75.000	54.500	6.500	5.875	72.560	2,865	2,873,000
SCB-XTE-2160	16312001	85.067	66.750	7.120	6.500 6.620	82.120	3,410	3,575,000
SCB-XTE-2510	16313001	98.800	78.400	6.625	6.000	98.000	4,000	4,951,000
SCB-XTE-3412	16314001	134.331	118.110	5.512	5.000	130.984	3,600	2,070,000
SCB-XTE-4320	16315001	170.079	146.850	6.024	5.512	--	8,030	4,176,000
SCB-XTE-5000	16316001	196.850	173.622	7.000	6.250	192.716	10,100	5,210,000
SCB-XTE-5544	16317001	218.268	197.244	5.512	5.039	216.142	8,700	3,190,000



SOCARE® No.	KAYDON No.	Gear Data $\alpha=20^\circ$						Fz (lbs) GearTooth Loas	Hole Data (in.)					
		D ₂	P _d Or M	Z ₂	b ₂	x ₂	Tooth Form		Outer Ring			Inner Ring		
									LO	n _o	B _o	L _i	n _i	B _i
SCB-XTE-241	16305001	9.250	8	74	1.141	0	FD	2,470	8.188	12	0.354	5.500	12	0.354
SCB-XTE-540	16306001	21.000	5/7	105	2.656	0	FS	10,570	19.156	16	0.813	13.750	18	0.813
SCB-XTE-773	16307001	30.000	3.5	105	3.250	0	SD	17,400	27.375	30	0.813	20.625	29	0.813
SCB-XTE-1000	12240001	39.000	4	156	2.750	0	SD	14,000	36.750	36	0.813	31.250	39	0.813
SCB-XTE-1286	16308001	50.000	2.5	125	3.620	0	SD	27,400	47.000	30	1.031	40.000	29	1.031
SCB-XTE-1379	1228801	53.500	2	107	3.000	0	SD	28,150	50.375	30	1.062	44.125	36	1.062
SCB-XTE-1428	16309001	55.600	2.5	139	3.850	0	FD	29,300	52.000	28	1.313	44.000	28	1.313
SCB-XTE-1557	16310001	60.500	2	121	4.000	0	SD	40,850	57.375	40	1.063	49.250	44	1.063
SCB-XTE-1905	16311001	74.000	2	148	4.000	0	FD	36,600	70.250	40	1.313	58.500	40	1.313
SCB-XTE-2160	16312001	84.000	1.5	126	6.000	0	SD	81,900	80.125	48	1.313	59.250	48	1.313
SCB-XTE-2510	16313001	98.000	2	196	4.750	0	SD	49,600	94.250	72	1.562	82.500	60	1.812
SCB-XTE-3412	16314001	132.520	(18)	187	4.724	0.28	FD	61,800	128.976	72	1.260	120.512	72	1.260
SCB-XTE-4320	16315001	168.504	(20)	214	5.512	0	FD	80,500	162.598	72	1.535	150.787	72	1.535
SCB-XTE-5000	16316001	195.276	(20)	248	5.512	0	FD	81,000	189.370	80	1.535	177.559	80	1.535
SCB-XTE-5544	16317001	217.323	(12)	460	3.780	0	FD	31,100	212.598	90	1.260	200.787	90	1.260

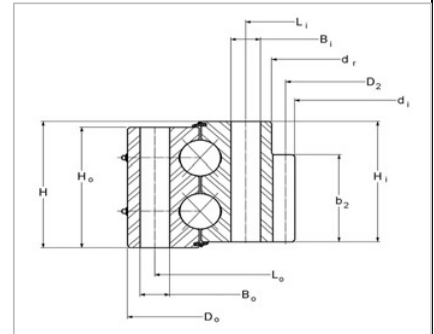




SOCARE® No.	KAYDON No.	Outline Dimensions (in.) and Weight (lbs)					Mounting Holes						MOMENT RATING C _{rm} ft-lbs
							Outer Ring			Inner Ring			
		D _o	d _i	H	H _o /H _i	G (lbs)	L _o	n _o	B _o	L _i	n _i	B _i	
SCB-517	16282001	20.375	12.250	4.500	4.185	210	18.875	20	0.688	13.625	20	0.688	102,500
SCB-756	16283001	29.750	18.620	7.000	6.500 6.551	645	27.875	34	0.813	20.375	32	0.813	363,100
SCB-1052	16284001	41.417	30.236	7.480	6.890	1,060	39.449	36	0.866	32.205	36	0.866	734,800
SCB-1428	16015001	56.250	43.750	6.750	6.380	1,520	53.630	36	1.313	46.380	36	1 1/4-7	2,083,600
SCB-1924	16285001	75.750	59.750	8.750	8.375	3,540	73.625	48	1.004	62.375	36	1.250	2,934,900
SCB-3327	16286001	131.00	114.000	8.000	7.500	6,950	127.000	64	1.131	118.000	64	1.313	5,666,800
SCB-4318	13004001	170.00	150.000	9.875	9.250	11,350	166.000	64	1.625	154.000	64	1.625	8,098,000



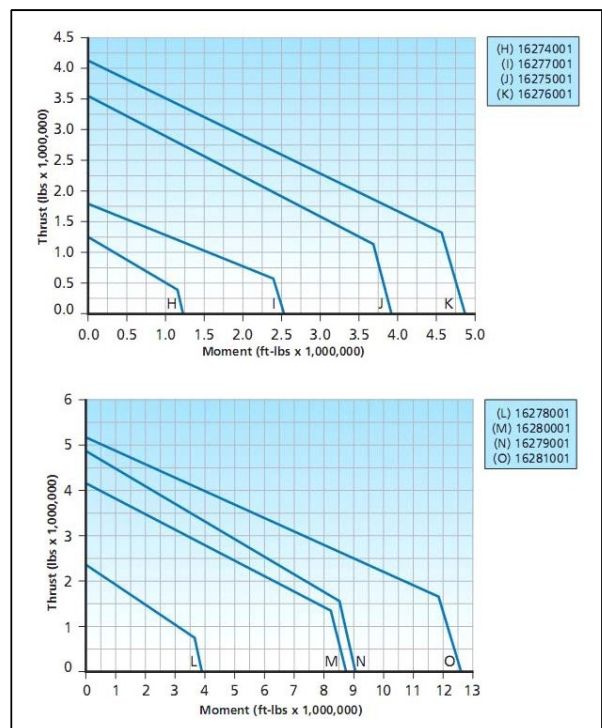
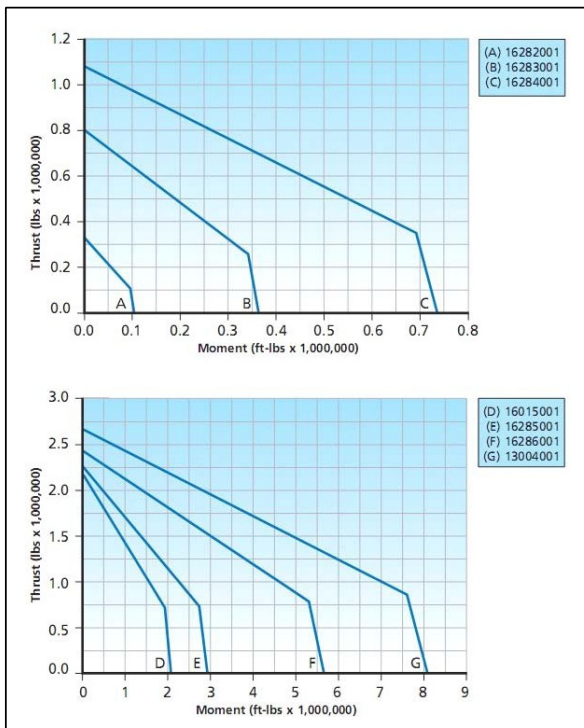
**Double-row Ball Slewing
Ring
Internal Gear DT Series**

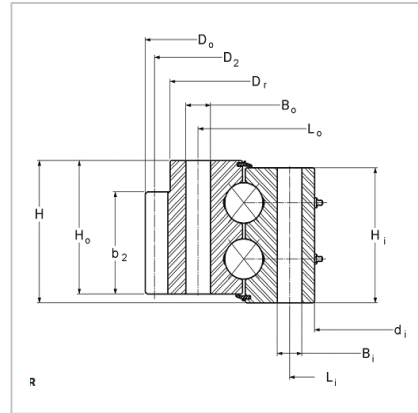


SOCARE® No.	KAYDON No.	Outline Dimensions (in.) and Weight (lbs)						Mounting Holes					
								Outer Ring			Inner Ring		
		D _o	d _i	H	H _o /H _i	d _r	G (lbs)	L _o	n _o	B _o	L _i	n _i	B _i
SCB-N-1440	16274001	56.693	43.661	5.472	5.118	46.142	1,200	54.724	48	0.866	48.425	48	0.866
SCB-N-1676	16275001	66.000	47.600	8.000	7.625	50.125	2,820	63.000	42	1.625	53.000	45	1.625
SCB-N-1791	16276001	70.500	50.200	8.625	8.312	52.125	3,700	67.625	36	1 1/2-6	55.000	40	1.625
SCB-N-2080	16277001	81.890	65.248	5.591	5.197	67.520	2,460	78.740	54	1.299	70.866	54	1.299
SCB-N-2392	16278001	94.173	77.008	7.126	6.732	79.291	3,410	90.787	60	1.535	82.677	60	1.535
SCB-N-2778	16279001	109.375	87.170	9.312	8.937 8.000	87.170	7,100	102.953	66	1.593	93.504	66	1.593
SCB-N-3073	16280001	121.000	98.400	8.750	8.438	102.250	7,440	117.000	72	1.625	105.000	72	1.625
SCB-N-3581	16281001	141.000	114.941	11.180	10.00 10.43	120.710	14,850	133.661	90	1.625	124.252	90	1.625



SOCARE® No.	KAYDON No.	Gear Data $\alpha=20^\circ$						Fz (lbs)	Crm <ft-lbs>
		D2	Pd or m	Z2	b2	x2	Tooth Form	Max GearTooth Loas	Moment rating
SCB-N-1440	16274001	44.094	<14>	80	4.134	-0.5	FD	48,640	1,225,400
SCB-N-1676	16275001	48.667	1.5	73	5.500	0	SD	78,680	3,921,100
SCB-N-1791	16276001	51.000	2	102	5.000	0	SD	56,400	4,863,400
SCB-N-2080	16277001	65.669	<12>	139	3.937	-0.5	FD	41,140	2,534,900
SCB-N-2392	16278001	77.480	<12>	164	3.937	-0.5	FD	40,770	3,896,200
SCB-N-2778	16279001	87.874	<18>	124	6.000	-0.5	FD	94,870	9,075,400
SCB-N-3073	16280001	100.000	1.25	125	6.000	0	FD	106,940	8,751,800
SCB-N-3581	16281001	116.221	<18>	165	10.000	-0.5	FD	155,340	12,625,000



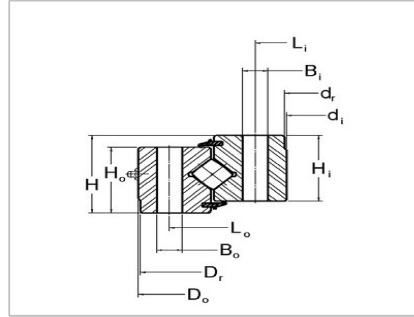


SOCARE® No.	KAYDON No.	Outline Dimensions (in.) and Weight (lbs)						Mounting Holes						
		D _o	d _i	H	H _o /H _i		D _r	G (lbs)	Outer Ring			Inner Ring		
					L _o	n _o			B _o	L _i	n _i	B _i		
SCB-E-434	16258001	17.086	10.250	3.313	3.000		17.086	105	15.354	18	0.563	11.614	24	0.563
SCB-E-1270	16264001	50.016	38.504	5.512	5.157	4.567	48.425	870	46.496	42	M24*3	40.551	48	1.024
SCB-E-1428	16265001	56.240	41.370	7.125	6.688		54.675	1,730	52.000	30	1.313	44.000	30	1.313
SCB-E-1747	16266001	68.800	51.250	7.375	6.875	7.000	68.800	2,850	64.250	36	1.438	55.000	42	1.438
SCB-E-1915	16267001	75.394	58.500	6.110	5.750		73.307	2,450	70.500	48	1.313	61.366	48	1.313
SCB-E-2265	16268001	89.181	71.400	7.090	6.650	6.730	96.566	3,360	83.622	60	1.299	74.016	60	1.299
SCB-E-2406	16269001	94.742	72.250	9.125	8.375	8.750	92.500	5,560	89.750	60	1.625	75.250	68	1.625
SCB-E-2616	16270001	102.992	84.134	7.205	6.654		99.331	3,970	95.906	64	1.299	87.205	68	1.535
SCB-E-3169	16271001	124.800	98.375	11.250	9.375	10.750	124.800	10,500	117.625	72	1.875	103.625	72	1.875
SCB-E-3652	16272001	143.800	114.000	11.062	10.250	10.437	143.800	14,980	136.625	72	2.156	121.375	72	2.156
SCB-E-4572	16273001	180.000	150.000	10.625	10.000		175.250	22,100	170.000	80	1.875	156.250	80	1.875

SOCARE® No.	KAYDON No.	Gear Data α=20°						F _z (lbs) Max GearTooth Loas	C _{rm} <ft-Ibs> Moment rating
		D ₂	P _d or m	Z ₂	b ₂	x ₂	Tooth Form		
SCB-E-434	16258001	16.800	5/7	84	1.750	0	FS	6,850	65,200
SCB-E-1270	16264001	49.134	<8>	156	3.346	+0.5	FD	19,390	970,400
SCB-E-1428	16265001	55.600	2.5	139	4.000	0	SD	30,480	2,132,100
SCB-E-1747	16266001	68.000	2	136	4.000	0	FD	36,480	3,470,900
SCB-E-1915	16267001	74.016	<10>	188	4.130	+0.8	FD	31,400	3,335,700
SCB-E-2265	16268001	87.638	<14>	159	5.080	+0.5	FD	53,760	4,793,200
SCB-E-2406	16269001	94.000	2	188	5.500	0	SD	55,490	8,669,000
SCB-E-2616	16270001	100.787	<20>	128	5.709	+0.5	FD	92,060	3,658,500
SCB-E-3169	16271001	123.200	1.25	154	6.000	0	FD	86,780	14,639,200
SCB-E-3652	16272001	143.000	2	286	8.000	0	SD	85,120	18,293,300
SCB-E-4572	16273001	178.000	1	178	7.000	0	FD	129,080	18,000,000



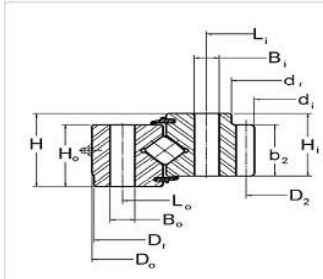
**Cross Roller Slewing Ring
No Gear XR Series**



SOCARE® No.	KAYDON No.	Outline Dimensions (in.) and Weight (lbs)							Mounting Holes						
									Outer Ring			Inner Ring			
		D _o	d _i	H	H _o /H _i		d _r	G (lbs)	L _o	n _o	B _o	L _i	n _i	B _i	
SCB-XR-300	16318001	11.811	5.512	1.417	1.181		--	30	10.630	6	M16*2	6.693	6	M16*2	
SCB-XR-4.3	16319001	15.886	9.055	2.165	1.772	1.850	--	65	14.094	24	0.512	10.197	24	0.512	
SCB-XR-695	16320001	27.362	18.779	3.031	2.520	2.244	18.897	27.283	185	25.197	28	0.709	20.000	28	0.709
SCB-XR-897	16321001	35.312	26.625	2.953	2.863		26.750	35.251	325	34.000	24	1/2-13	29.000	24	0.590
SCB-XR-1175	16322001	46.250	34.250	4.250	3.880		34.380	--	765	44.000	28	1-8	36.250	28	1.063
SCB-XR-1432	16323001	56.380	46.770	3.820	3.470	3.430	46.850	56.295	710	40.000	36	0.813	33.875	36	3/4-16
SCB-XR-2159	16324001	85.000	74.000	3.750	3.250		74.120	84.880	1190	83.000	42	0.938	76.000	42	0.938
SCB-XR-2413	16325001	95.000	82.000	4.000	3.500		82.063	94.875	1660	93.000	48	1.063	85.000	48	1.063
SCB-XR-3350	16326001	131.890	112.205	7.874	6.496	7.087	120.866	131.25	6500	127.559	40	M36*3	116.535	40	1.496
SCB-XR-4030	16327001	158.661	140.945	8.819	6.654		--	--	6400	155.315	92	1.654	144.291	92	1.654

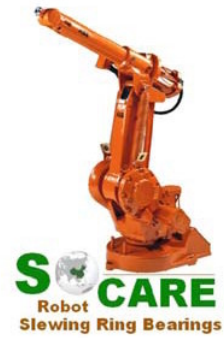


**Cross Roller Slewing Ring
Internal Gear XR Series**



SOCARE® No.	KAYDON No.	Outline Dimensions (in.) and Weight (lbs)							Mounting Holes										
									Outer Ring			Inner Ring							
		*Dr=41.929 of 16331001							D _o	d _i	H	H _o /H _i		d _r	G (lbs)	L _o	n _o	B _o	L _i
SCB-XRN-678	16328001	26.700	18.667	2.500	2.000		--	130	24.500	18	1/2-13	20.500	18	1/2-13					
SCB-XRN-914	16329001	36.000	24.160	3.880	3.380		-32.360	465	33.250	24	0.813	27.250	30	3/4-10					
SCB-XRN-1054	16330001	41.500	30.320	4.190	3.370	4.000	--	510	40.000	36	0.807	33.500	36	3/4-16					
SCB-XRN-1066	16331001	41.970	30.828	3.350	2.560	2.950	46.380	400	39.961	24	M20*2.5	34.646	24	M20*2.5					
SCB-XRN-1390	16332001	54.740	44.400	4.500	3.750	4.130	65.157	500	53.000	36	0.922	48.000	36	7/8-14					
SCB-XRN-2002	16333001	78.819	62.913	5.906	4.921		97.500	2,050	76.575	48	1.181	67.520	48	1.181					
SCB-XRN-2896	16334001	114.000	95.000	6.000	5.500		--	4,250	111.000	48	1.063	100.000	48	1-8					
SCB-XRN-3085	16335001	121.496	97.717	6.772	6.299		--	6,080	117.795	72	1.535	105.512	72	1.535					

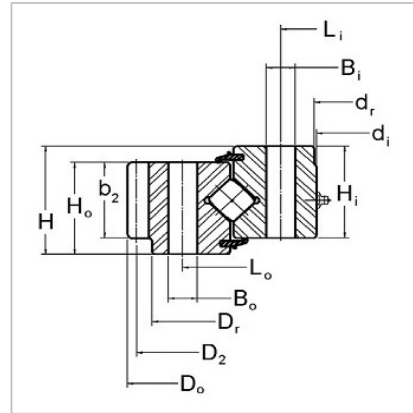
SOCARE® No.	KAYDON No.	Gear Data $\alpha=20^\circ$						Fz (lbs) GearTooth Loas
		D ₂	Pa/M	Z ₂	b ₂	x ₂	Tooth Form	
SCB-XRN-678	16328001	19.000	6	114	2.000	0	FD	6,345
SCB-XRN-914	16329001	24.800	2.5	62	3.380	0	SD	27,300
SCB-XRN-1054	16330001	30.800	2.5	77	3.500	-0.4	FD	27,600
SCB-XRN-1066	16331001	31.102	<10>	79	2.950	-0.625	FD	22,820
SCB-XRN-1390	16332001	45.200	2.5	113	3.750	0	FD	28,600
SCB-XRN-2002	16333001	63.307	<12>	134	4.528	-0.5	FD	40,350
SCB-XRN-2896	16334001	96.000	2	192	5.000	0	FD	54,550
SCB-XRN-3085	16335001	98.268	<24>	104	6.299	-0.708	FD	134,270



MSI-SOCARE®



**Cross Roller Slewing Ring
External Gear XR Series**



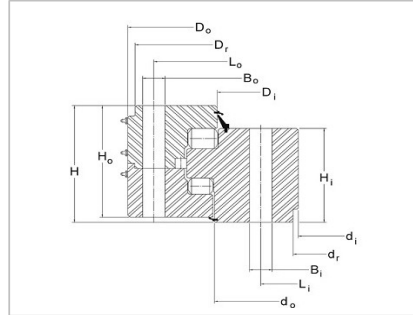
SOCARE® No.	KAYDON No.	Outline Dimensions (in.) and Weight (lbs)								Mounting Holes					
		D _o	d _i	H	H _o /H _i		D _r	d _r	G (lbs)	Outer Ring			Inner Ring		
					L _o	n _o				B _o	L _i	n _i	B _i		
SCB-XRE-406	16337001	16.000	9.190	2.170	1.770	1.850	14.880	9.250	55	14.094	24	0.562	10.197	24	0.562
SCB-XRE-592	16338001	23.333	13.750	2.750	2.500		--	--	175	20.875	12	0.688	15.375	12	0.688
SCB-XRE-695	16339001	27.362	18.780	3.030	2.520	2.240	26.380	18.900	180	25.197	18	0.688	20.000	18	0.688
SCB-XRE-854	16340001	33.627	26.535	2.205	1.752	1.752	--	--	140	30.906	36	M12*1.75	27.480	40	0.551
SCB-XRE-922	16341001	36.333	24.500	4.690	4.310	3.880	35.500	24.625	580	33.625	24	0.813	26.125	24	0.813
SCB-XRE-1144	16342001	45.050	34.180	3.930	3.360	3.470	42.840	34.250	470	41.338	24	0.866	35.826	24	0.866
SCB-XRE-1296	16343001	51.040	40.000	4.000	3.500		--	--	680	48.200	36	0.813	41.800	36	0.813
SCB-XRE-1604	16344001	63.150	47.480	5.118	4.409		61.063	47.559	1,420	58.819	36	1.023	50.394	36	1.023
SCB-XRE-1791	16345001	70.510	53.540	5.040	4.330		--	--	1,460	65.354	42	1.063	55.906	42	1.063
SCB-XRE-2181	16346001	85.866	75.250	3.300	2.800		--	--	920	82.750	48	0.813	77.250	48	0.813
SCB-XRE-2557	16347001	100.667	84.000	6.500	6.500	4.000	98.750	84.250	3,240	95.000	48	1-8	87.000	48	1.063

SOCARE® No.	KAYDON No.	Gear Data α=20°						F _z (lbs) Max GearTooth Loas
		D ₂	P _d or m	Z ₂	b ₂	x ₂	Tooth Form	
SCB-XRE-406	16337001	15.600	5	78	1.460	0	FD	4,320
SCB-XRE-592	16338001	23.000	6	138	2.500	0	FD	7,430
SCB-XRE-695	16339001	26.969	<5>	137	1.650	0	FD	5,725
SCB-XRE-854	16340001	33.071	<8>	105	1.752	0	FD	9,130
SCB-XRE-922	16341001	36.000	6	216	4.000	0	FD	12,700
SCB-XRE-1144	16342001	43.701	<10>	111	2.580	+0.713	FD	15,490
SCB-XRE-1296	16343001	50.400	2.5	126	3.500	0	SD	24,380
SCB-XRE-1604	16344001	61.811	<10>	157	3.346	+0.750	FD	20,640
SCB-XRE-1791	16345001	68.346	<14>	124	4.330	+1.150	FD	36,690
SCB-XRE-2181	16346001	85.333	3	256	2.800	0	SD	18,280
SCB-XRE-2557	16347001	100.000	3	300	6.000	0	FD	32,030





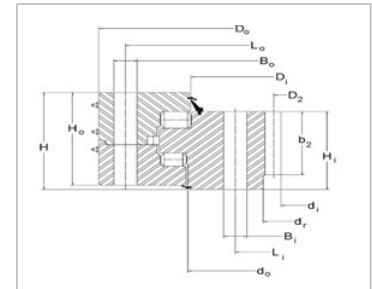
**Triple-row Roller Slewing Ring
No Gear TR Series**



SOCARE® No.	KAYDON No.	Outline Dimensions (in.) and Weight (lbs)										Mounting Holes			
		D _o	d _i	H	H _o	H _i	d _r	D _r	D _i	d _o	Outer Ring		Inner Ring		
											LO	B _o =B _i	no=ni	Li	
SCB-TR-1233	16349001	48.560	33.000	7.300	6.880	6.380	33.12	48.500	39.310	39.710	46.000	1.313	1 1/4-7	32	36.000
SCB-TR-1445	16350001	56.890	41.535	8.661	8.150	6.772	--	--	47.215	47.563	54.843	1.024		48	43.538
SCB-TR-1962	16351001	77.250	59.880	7.550	7.000	7.120	60.00	77.125	69.410	70.420	74.500	1.250		44	62.500
SCB-TR-2362	16352001	93.000	72.500	9.050	8.630	8.620	--	--	80.960	81.410	89.500	1.625		60	76.000
SCB-TR-3012	16353001	118.583	97.638	7.677	7.283	6.102	--	--	107.087	107.102	115.039	1.535		72	101.181
SCB-TR-3110	16354001	122.480	107.638	5.945	5.472	4.646	--	--	113.780	113.976	119.882	1.299		66	110.236
SCB-TR-4013	16356001	158.000	136.500	9.000	8.500	7.250	--	--	146.280	146.080	154.000	1.563		100	140.500
SCB-TR-5270	16387001	207.480	187.795	8.819	8.425	8.425	--	--	198.622	199.055	202.756	1.535		120	190.945
SCB-TR-6000	16366001	236.220	210.236	12.205	9.842	11.811	--	--	225.433	221.409	231.102	1.772		120	215.354



**Triple-row Roller Slewing Ring
Internal Gear TR Series**



SOCARE® No.	KAYDON No.	Outline Dimensions (in.)								Mounting Holes					Weight (lbs) G
		D _o	d _i	H	H _o /H _i		d _r	D _i	d _o	Outer Ring		Inner Ring			
					LO	B _o				no=ni	Li	Bi			
SCB-TRN-1385	16376001	54.530	41.760	4.720	4.410	3.700	43.380	48.150	48.390	52.953	1.024	36	45.079	1.024	950
SCB-TRN-1630	16377001	64.173	46.850	7.874	7.283	6.299	--	54.803	54.567	61.811	1.024	48	50.551	1.024	2,650
SCB-TRN-1791	16378001	70.500	50.200	8.620	8.120	6.750	52.250	59.800	60.220	67.625	1 1/2-6	48	55.000	1.563	3,550
SCB-TRN-2216	16379001	87.244	68.032	6.969	6.772	5.315	71.102	77.764	78.112	84.646	1.299	60	73.819	1.299	3,460
SCB-TRN-2748	16380001	108.189	85.433	8.504	8.150	6.850	88.150	97.126	96.339	104.646	1.772	80	91.890	1.772	6,000
SCB-TRN-3069	16381001	120.866	97.008	13.701	10.157	11.732	97.008	108.740	109.291	117.717	1.535	72	104.724	1.535	10,820
SCB-TRN-3190	16382001	125.620	106.333	8.380	6.810	6.880	--	115.280	115.630	122.812	1.563	72	112.250	1 1/2-6	5,800
SCB-TRN-3950	16383001	155.512	131.339	9.055	8.661	7.284	133.701	143.307	143.701	151.969	1.535	96	137.402	1.535	10,550
SCB-TRN-4760	16384001	187.402	162.992	9.252	8.858	7.480	--	175.158	175.591	183.858	1.535	90	169.882	1.535	14,200
SCB-TRN-5791	16385001	228.000	198.000	11.750	11.250	9.250	203.000	213.630	214.130	221.000	1.563	150	207.000	1.563	24,950

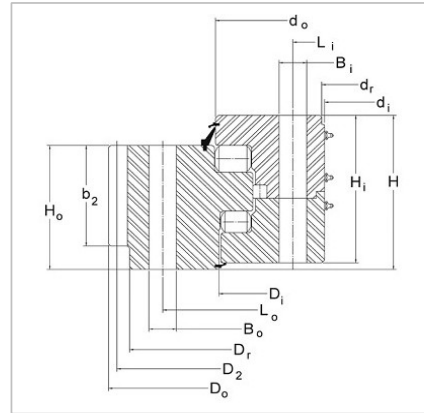


SOCARE® No.	KAYDON No.	Gear Data $\alpha=20^\circ$						Fz (lbs) GearTooth Loas
		D ₂	P _d /M	Z ₂	b ₂	x ₂	Tooth Form	
SCB-TRN-1385	16376001	42.400	2.5	106	3.390	0	SD	28,250
SCB-TRN-1630	16377001	46.850	<10>	119	6.299	-0.75	FD	55,480
SCB-TRN-1791	16378001	51.000	2	102	5.000	0	SD	56,440
SCB-TRN-2216	16379001	68.661	<16>	109	4.252	-0.5	FD	60,240
SCB-TRN-2748	16380001	85.984	<14>	156	4.724	-0.5	FD	57,210
SCB-TRN-3069	16381001	97.874	<22>	113	8.000	-0.5	FD	143,850
SCB-TRN-3190	16382001	107.333	1.5	161	6.880	-0.25	FD	93,140
SCB-TRN-3950	16383001	132.284	<12>	280	5.906	0	FD	59,840
SCB-TRN-4760	16384001	164.567	<20>	209	7.480	0	FD	128,000
SCB-TRN-5791	16385001	200.000	1	200	6.000	0	FD	130,700

SOCARE®

WWW.SLEWINGRINGS.NET





SOCARE® No.	KAYDON No.	Outline Dimensions (in.)								Mounting Holes				
		D _o	d _i	H	H _o /H _i		D _r	D _t	d _o	Outer Ring		Inner Ring		
					L _o	n _o				B _o -B _i	L _i	n _i		
*SCB-TRE-1450	16367001	57.100	42.500	5.000	4.500		53.750	48.850	49.090	52.000	40	1.094	44.375	40
*SCB-TRE-1811	16368001	71.338	57.000	5.850	4.790	4.630	69.040	63.760	64.030	66.889	60	1.024	59.252	60
SCB-TRE-2484	16369001	97.795	76.850	7.126	5.472	6.772	--	86.614	87.047	91.535	40	1.535	79.921	40
SCB-TRE-2941	16370001	115.800	90.500	10.750	8.500	10.250	--	104.240	104.040	109.750	96	1 1/2-6	94.500	96
SCB-TRE-3880	16371001	152.756	129.921	10.039	8.071	9.646	--	141.535	141.339	145.669	90	1.299	133.465	90
SCB-TRE-4320	16372001	170.079	144.882	9.941	7.638	9.449	--	156.729	157.155	162.992	120	1.535	148.425	120
SCB-TRE-5358	16373001	210.968	187.795	8.819	8.425	8.425	207.48	198.622	199.055	202.756	120	1.535	190.945	120
SCB-TRE-5918	16388001	233.000	203.000	11.750	9.250	11.250	228.00	216.880	217.380	224.000	150	1.563	207.000	150
*SCB-TR-1450	d _r =42.630		Other items have no dr dimensions											
*SCB-TR-1450	d _r =57.080													

SOCARE® No.	KAYDON No.	Gear Data α=20°						F _z (lbs) Max Gear Tooth Loas	Weight G (lbs)
		D ₂	P _d or m	Z ₂	b ₂	x ₂	Tooth Form		
SCB-TRE-	16367001	56.000	1.5	84	4.000	-0.18	FD	46,750	1,250
SCB-TRE-	16368001	69.921	<12>	148	3.430	+0.50	FD	27,510	1,600
SCB-TRE-	16369001	96.378	<18>	136	5.472	0	FD	70,630	4,400
SCB-TRE-	16370001	115.000	2	230	8.500	0	SD	89,510	10,000
SCB-TRE-	16371001	150.394	<20>	191	8.071	+0.50	FD	117,500	11,130
SCB-TRE-	16372001	168.504	<20>	214	7.638	0	FD	111,600	13,830
SCB-TRE-	16373001	208.346	<18>	294	5.906	+0.85	FD	78,770	14,330
SCB-TRE-	16388001	230.000	1	230	7.000	+0.50	FD	130,300	25,500



www.slewingrings.net